

# Disability Management



Because the skills and knowledge of employees are often an organization's greatest asset, there is an obvious business advantage to manage this human capital. Specializing in Disability Management, Attendance Management, Workers' Compensation, Adjudication and Human Resources Consulting, our team of experts will provide industry leading and verifiable solutions that instill healthy organizational balance, all while offering a significant return on your investment.

## Service Offerings

### 1. Audit / Gap Analysis

Our professionals have a keen eye on identifying current strengths, historical challenges and opportunities for improvement. We will collaborate with you to improve, redesign or create programs and policies based on the identified needs.

### 2. Workers' Compensation Services

Our approach is a truly 'one-stop' solution that ensures claims are handled appropriately by experienced professionals who understand the law, policies and cost mitigation strategies. Coupled with our extensive in-house medical and rehabilitation services, we excel in our ability to achieve superior outcomes for our clients.

#### Claims Management

- Cost Recover
- Appeals Representation
- Rate Classification Review
- Workers' Compensation Program Design

*“Our full suite of disability management solutions are appropriately customized to ensure that we achieve outcomes in a manner that remains consistent with our clients corporate vision, mission and values.”*

1-855-444-0834  
employerservices@lifemark.ca  
lifemarkworkhealth.ca

**lifemark** 

WORKPLACE HEALTH & WELLNESS

# Disability Management

## 3. Non-Occupational Disability Services

Lifemark adjudicates claims for organizations with self-funded weekly indemnity or short-term disability plans.

Concurrent to our adjudication services, or on a stand-alone basis, we provide disability case management. We strive to work with all stakeholders towards the common goal of facilitating a quicker, better and sustained recovery for the injured/ill employee.

### Case Management

- Short-Term Disability Adjudication
- Short-Term Disability Program Design

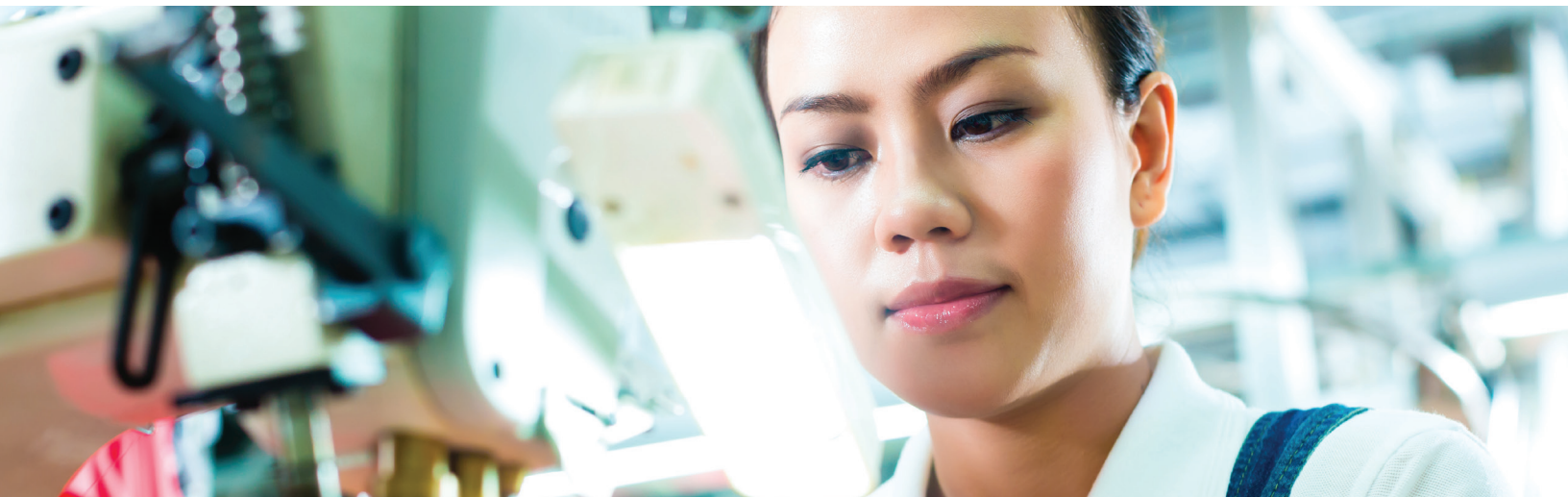
## 4. Attendance Management

## 5. Drug and Alcohol Assessment, Testing and/or Maintenance & Monitoring

## 6. Medical Coordination Services

As Canada's largest integrated healthcare company, we have unparalleled capabilities and can offer an all-in-one solution of services including, but not limited to: Independent Medical Evaluations, Diagnostic Testing, Substance Abuse Professionals, Drug & Alcohol Testing, Pre-Employment Screening, Ergonomic Assessments, Functional Capacity Evaluations, Physical Therapy, Massage Therapy, Psychological Assessment and Counselling, Fit for Work Assessment, Return to Work Medicals and Medical Director Services.

*“We strive to work with all stakeholders towards the common goal of facilitating a quicker, better and sustained recovery for the injured / ill employee.”*



1-855-444-0834  
employerservices@lifemark.ca  
lifemarkworkhealth.ca

**lifemark**   
WORKPLACE HEALTH & WELLNESS