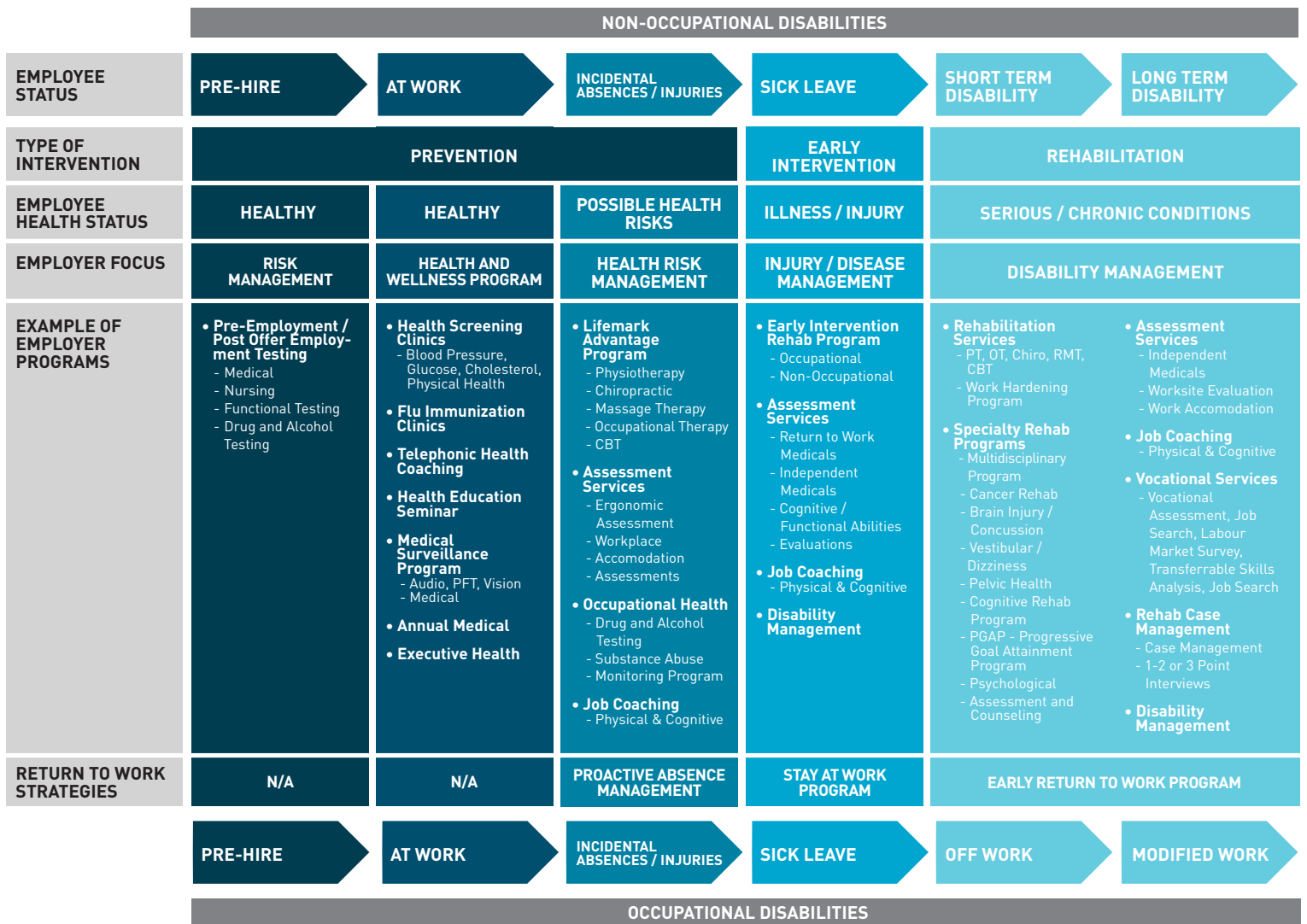


# Employee Continuum Of Care



Lifemark provides a comprehensive list of services to help you ensure your employees are safe and productive at work. Our experience across Canada involves working with employers from all industries with sizes ranging from under 50 to 22,000 employees. Our services are specifically designed and tailored to meet each of your needs.

1-855-444-0834  
 employerservices@lifemark.ca  
 www.lifemarkworkhealth.ca

**Lifemark**   
 HEALTH GROUP